

規格

接觸負載：1A 120VAC / 28 VDC.

電氣壽命：60,000 循環 (滿負載)

初始接觸電阻：20MΩ max. (在 2.4VDC.100mA 下)
(適用於銀合金或鍍金觸點材料)

絕緣電阻：1,000MΩmin.

絕緣電壓：1,000V RMS

工作溫度：-30°C ~ 85°C.

材料

外框 - 己二烯酞酸脂(DAP)

橡皮端子-黑色聚酯纖維

襯套 - 黃銅, 鍍鎳

墊圈 - 不銹鋼

終端保護- 電鍍黃銅

觸點-銀合金, 鍍銀

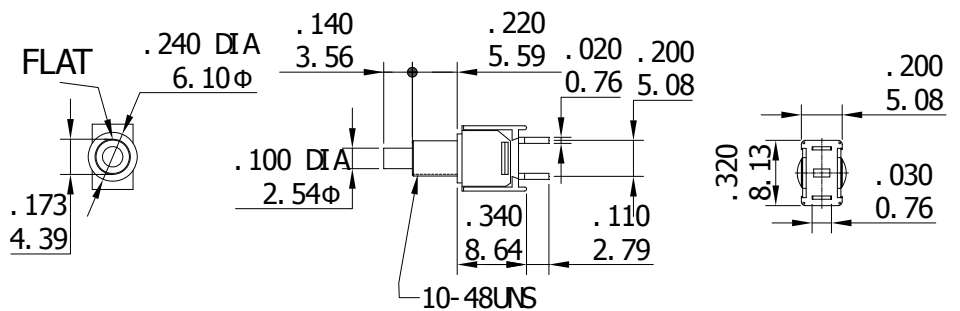
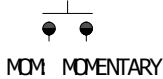
終端 - 黃銅, 鍍銀



SPST

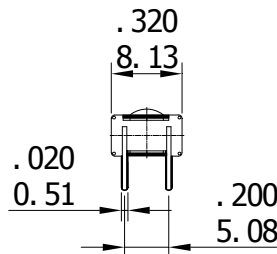
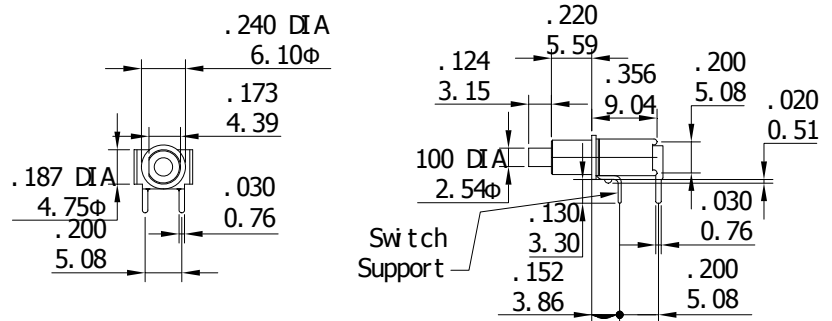
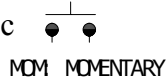
產品編號	類型	
AS-01	OFF	MOM

Schemac

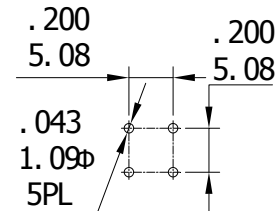


產品編號	類型	
AS-02	OFF	MOM

Schematic



P. C. MOUNTING



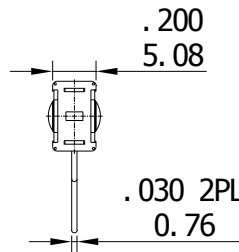
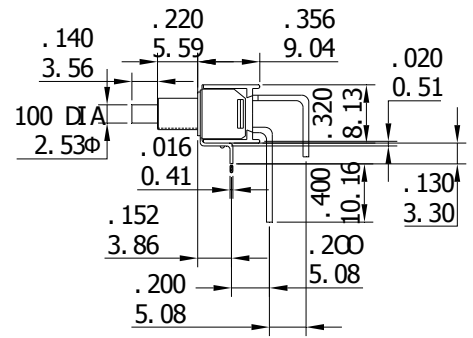
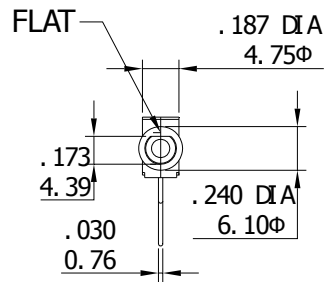
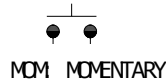
MS700 系列

MASSUSE SWITCH

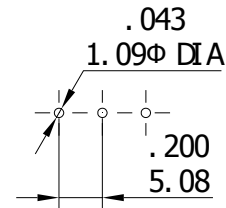


產品編號	類型	
AS-03	OFF	MOM

Schematic

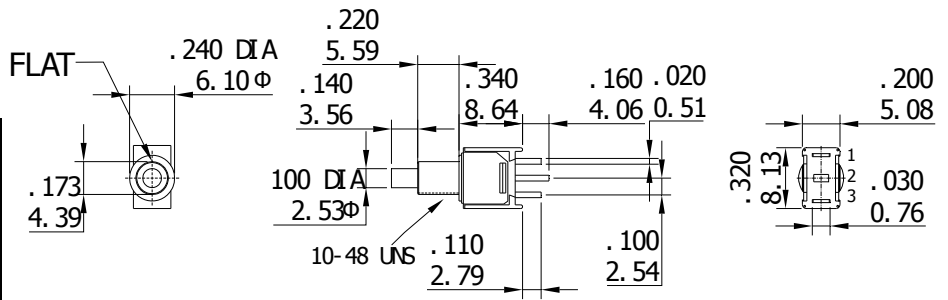
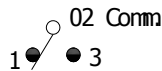


P. C. MOUNTING



產品編號	類型	
AS-04	OFF	MOM
Term.	2-1	2-3
Comm.		

Schematic

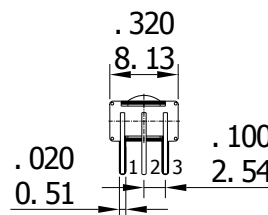
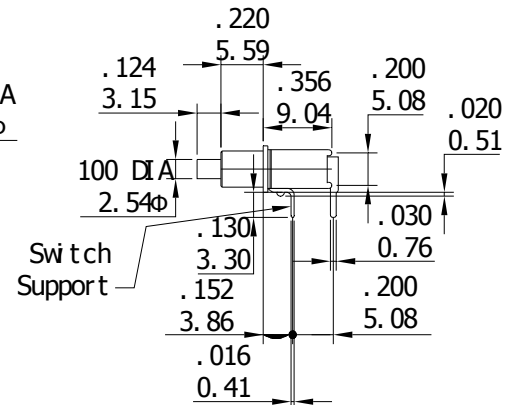
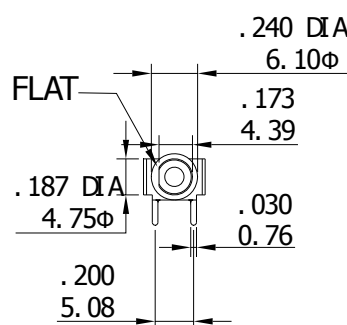
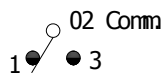


SPDT

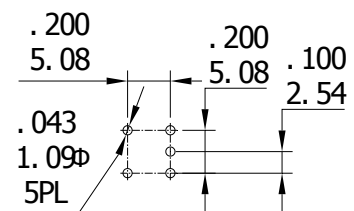


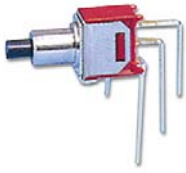
產品編號	類型	
AS-05	ON	MOM
Term.	2-1	2-3
Comm.		

Schematic

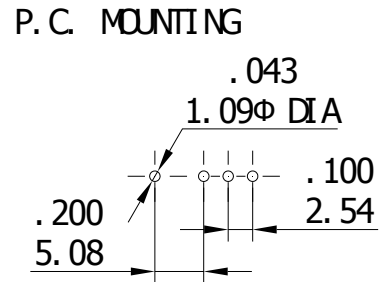
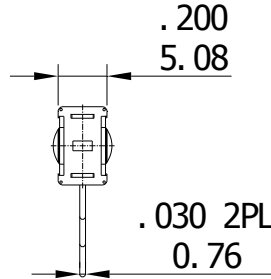
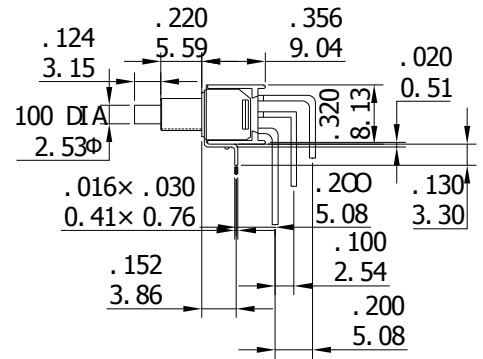
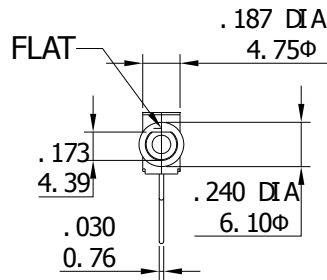


P. C. MOUNTING





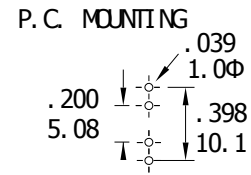
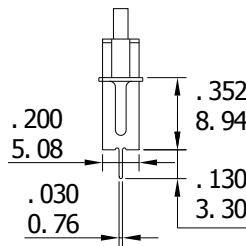
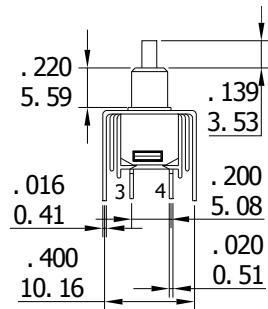
產品編號	類型	
AS-06	ON	MOM
Term.	2-1	2-3
Comm.		



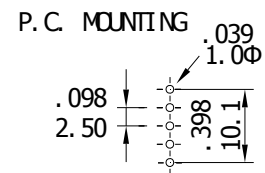
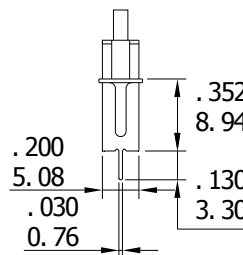
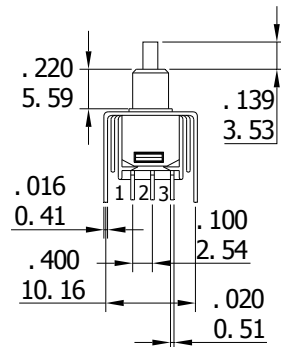
VERTICAL SUPPORT BRACKET OPTIONS



SPST



SPDT



CAPS

