

# MS600 系列

# MASSUSE SWITCH

## 規格

接觸負載: 3A 120VAC / 28 VDC (阻性)

電氣壽命: 30,000 循環 (滿負載)

初始接觸電阻: 20MΩ max (在 2.4VDC.100mA 下)

(適用於銀合金或鍍金觸點材料)

絕緣電阻: 1,000MΩmin.

介質耐壓: 1,000V RMS

工作溫度: -30°C ~ 85°C.

## 材料

外框-密膠或己二烯酞酸脂(DAP)

外殼 - 尼龍

襯套 - 黃銅, nickel plated.

墊圈 - 不銹鋼

終端/開關 保護 : 電鍍黃銅

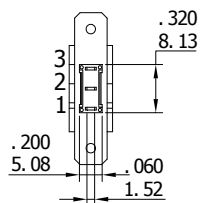
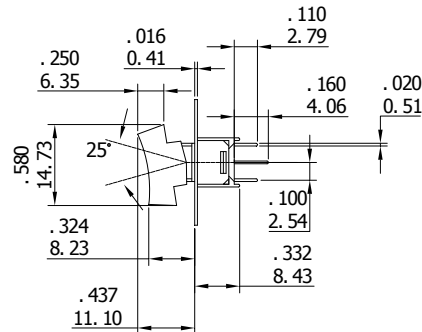
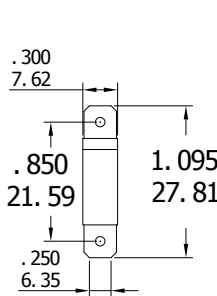
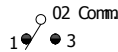
觸點 - 銀合金, 鍍銀

中心觸點和終端觸點 - 黃銅, 鍍銀



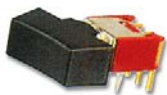
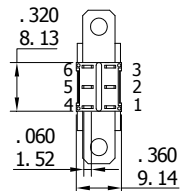
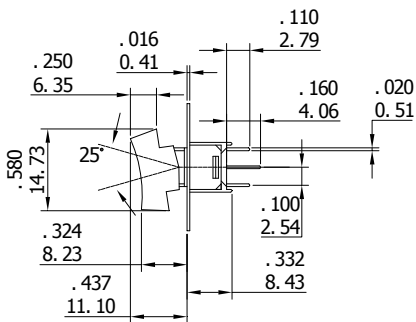
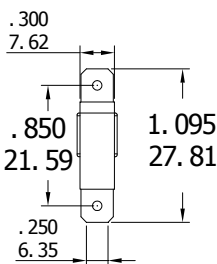
產品 編號	切換位置		
RS-41	ON	NONE	ON
Term	2-3	OPEN	2-1
Comm.			

Schematic



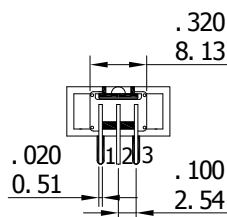
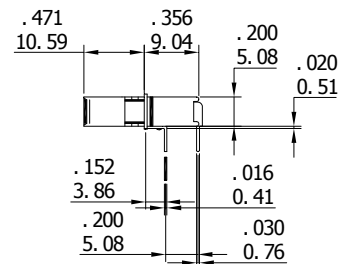
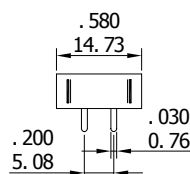
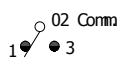
產品 編號	切換位置		
RS-51	ON	NONE	ON
Term	2-3	OPEN	2-1
Comm.	5-6		5-4

Schematic

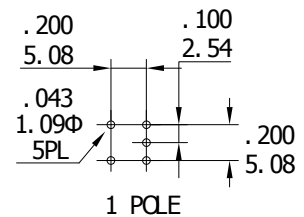


產品 編號	切換位置		
RS-61	ON	NONE	ON
Term	2-3	OPEN	2-1
Comm.			

Schematic



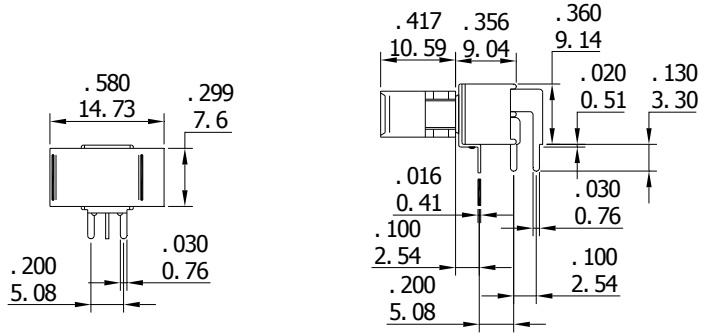
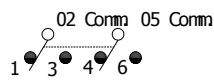
## P. C MOUNTING



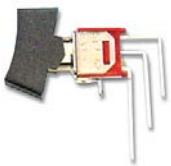
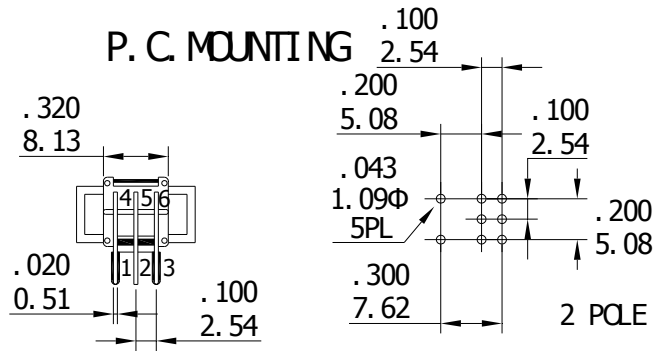


產品 編號	切換位置		
	RS-71	ON	NONE
Term	2-3	OPEN	2-1
Comm.	5-6		5-1

Schematic

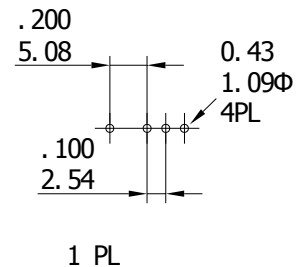
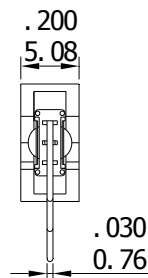
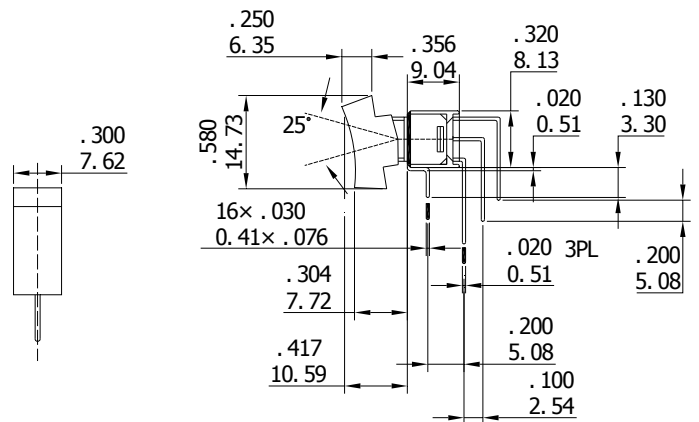
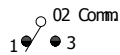


P. C. MOUNTING



產品 編號	切換位置		
	RS-81	ON	NONE
Term	2-3	OPEN	2-1
Comm.			

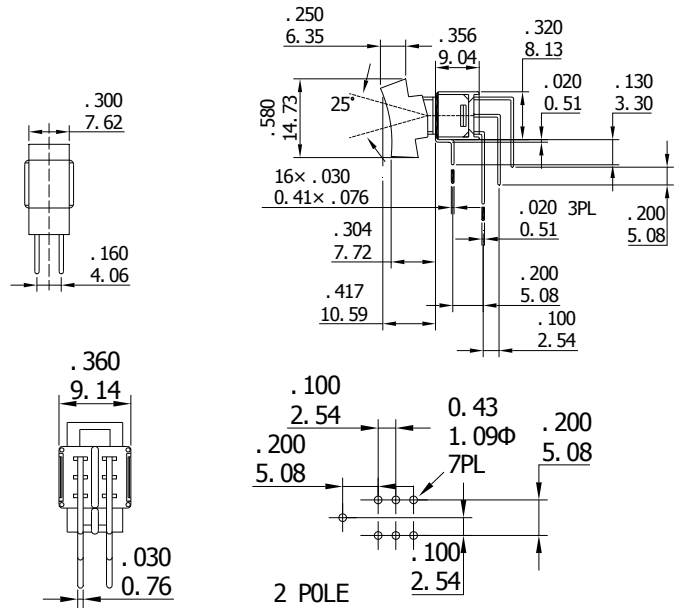
Schematic





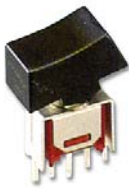
**DPDT**

產品 編號	切換位置		
RS-91	ON	NONE	ON
Term	2-3	OPEN	2-1
Comm.	5-6		5-4

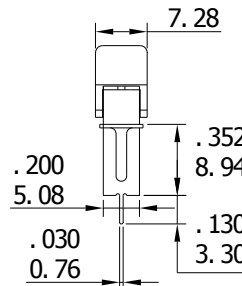
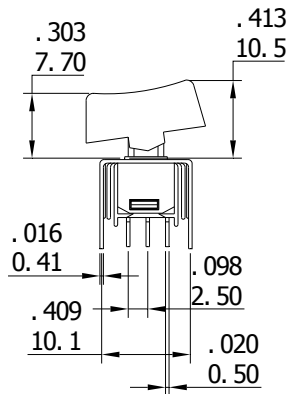


## VERTICAL SUPPORT BRACKET OPTIONS

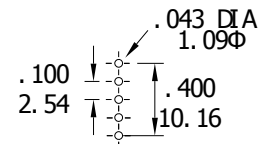
**RS-40**



**SPDT**



P.C. MOUNTING

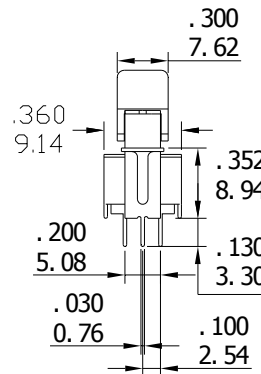
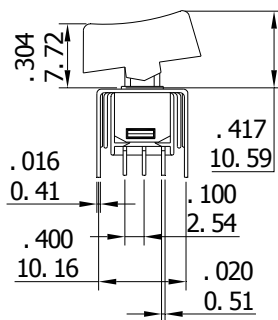


**RS-50**

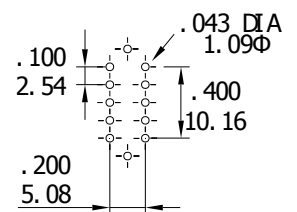


**DPDT**

POS. 1 POS. 2 POS. 3



P.C. MOUNTING



## CONTACT MATERIAL OPTIONS

**Q**

終端觸點: 銀合金, 鍍銀.

中心觸點和終端觸點 - 黃銅, 銀鎳合金

負載: 3 A 125/ 28 VDC; 1 A 250 VAC.

**R**

觸點&終端: 黃銅, 鍍金

負載: 0.4 VA max. @ 20 VAC 或 DC max.