

# M400 系列

# MASSUSE SWITCH

## 規格

接觸負載: 5A 120VAC/ 28 VDC (阻性)

電氣壽命: 50,000 循環 (滿負載)

初始接觸電阻: 10MΩ (2.4VDC.100mA)

(適用於銀合金或鍍金觸點材料)

絕緣電阻: 1,000MΩmin.

介質耐壓: 1,000V RMS

工作溫度: -30°C ~ 85°C.

## 材料

外框-密膠或己二烯酞酸脂(DAP)

搖頭手柄- 黃銅, 鍍鉻

襯套 - 黃銅, 鍍鎳

墊圈 - 不銹鋼

終端觸點 銀合金, 鍍銀

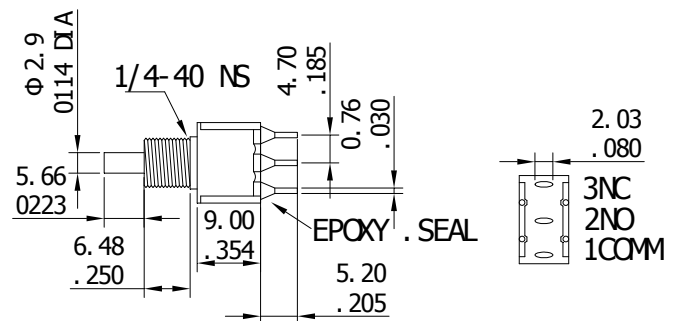
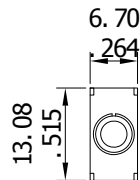
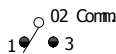
線端 黃銅, 鍍銀

中心觸點和終端觸點 - 黃銅, 鍍銀



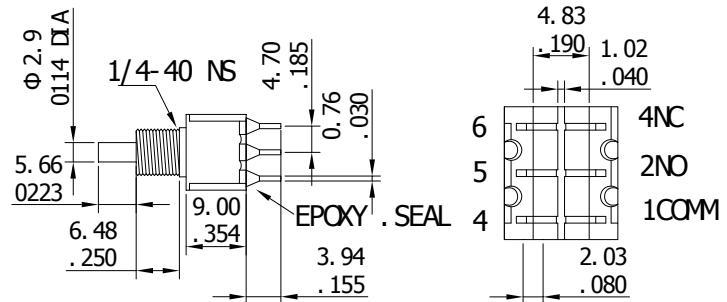
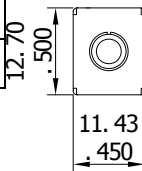
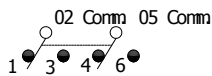
**SPDT**

產品編號	類型	
A101	ON	MON
Term. Comm.	1-3	1-2

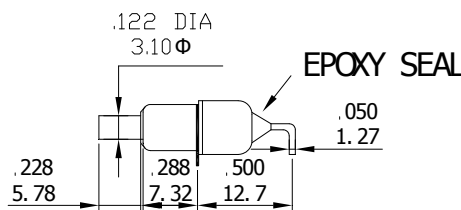
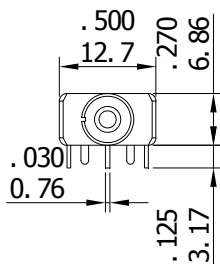


**DPDT**

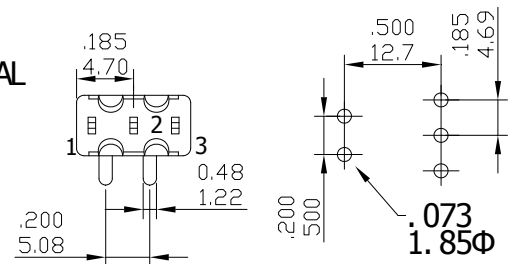
產品編號	類型	
A202	ON	MON
Term. Comm.	1-3,4-6	1-2,4-5



## A3

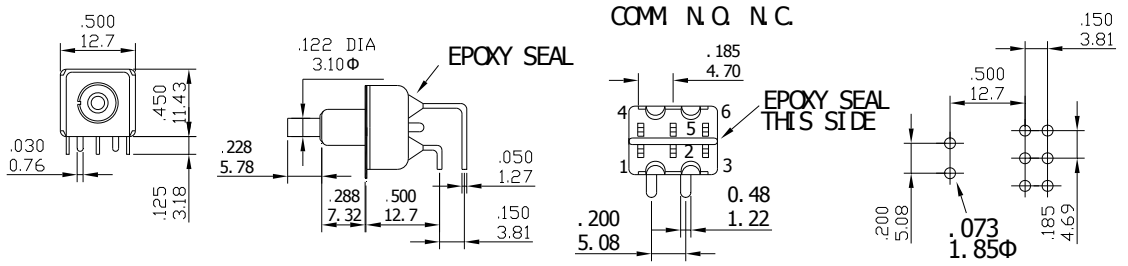


COMM N.O. N.C.

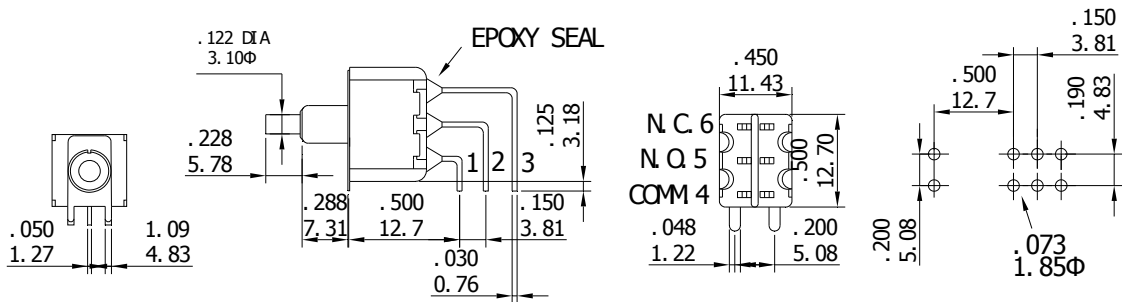
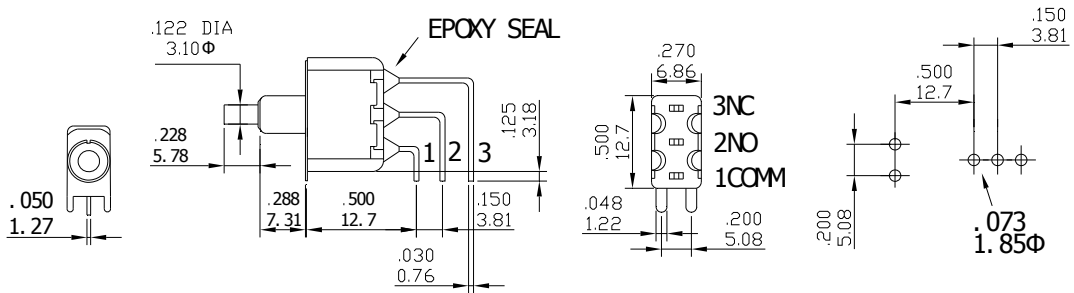




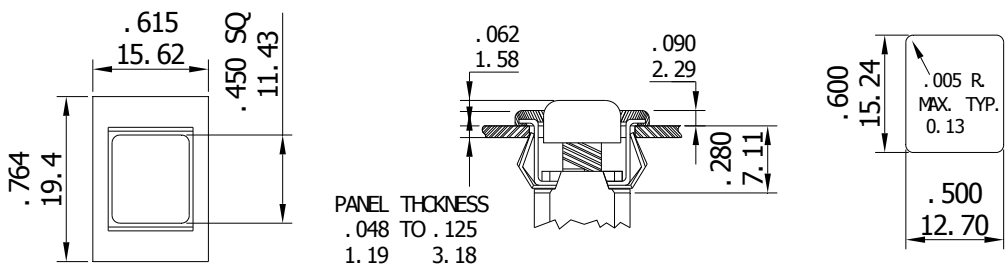
**DPDT**



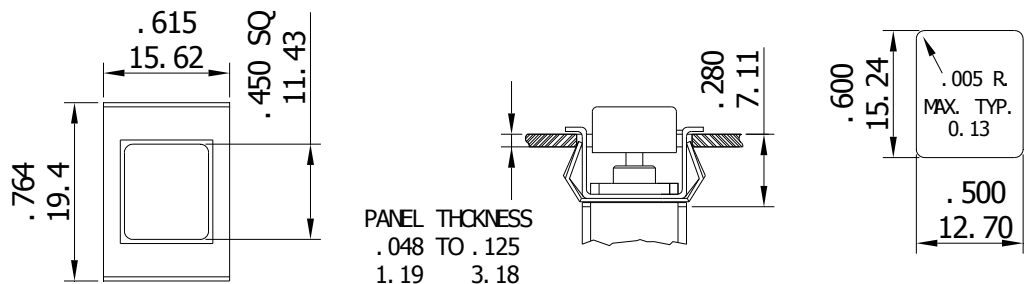
**A F**



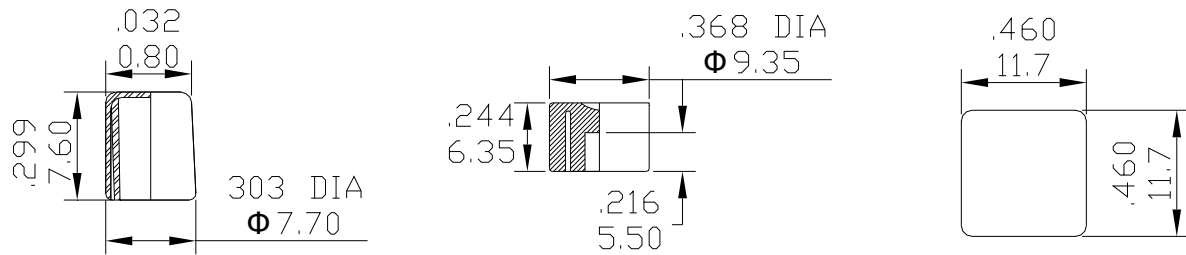
**A7**



**A8**

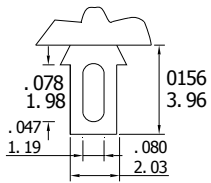


## CAPS



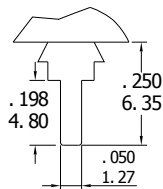
## TERMINATION OPTIONS

A1STD



THK .030 (0.76)

A2



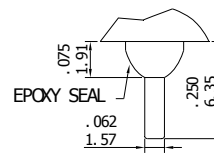
THK .030 (0.76)

A3-E



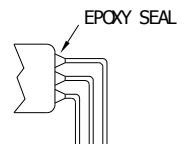
EPOXY SEAL

A4-E



EPOXY SEAL

A5



EPOXY SEAL