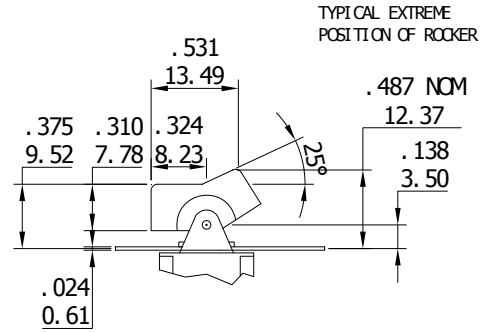
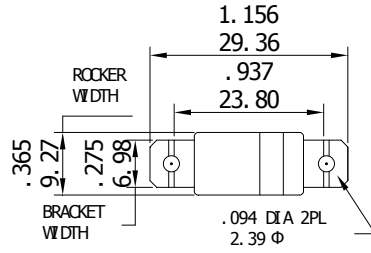
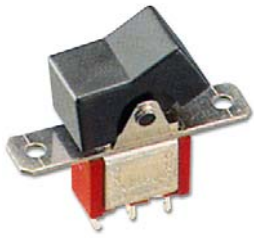
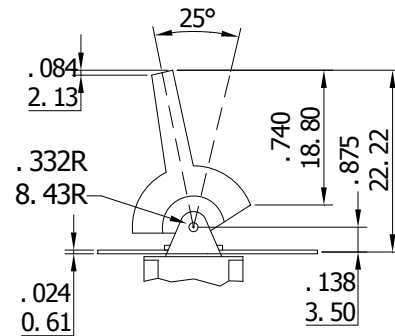
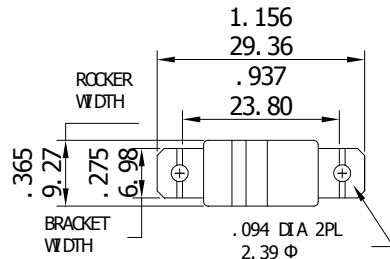


ACTUATOR OPTIONS

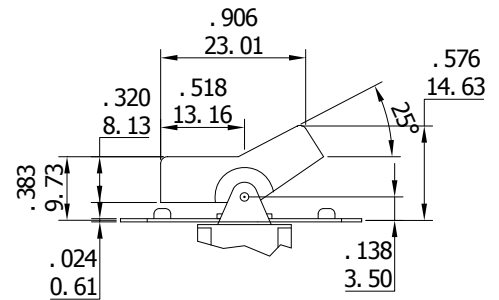
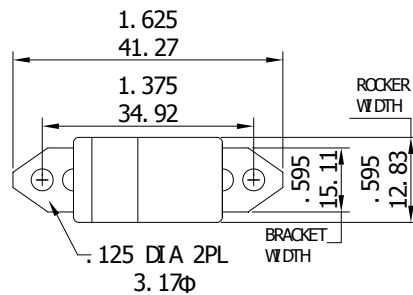
R1



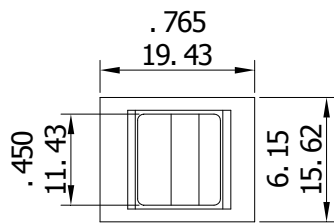
R2



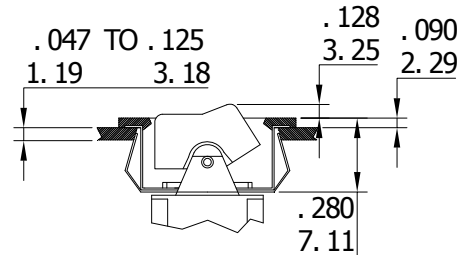
R3



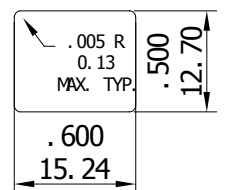
R4



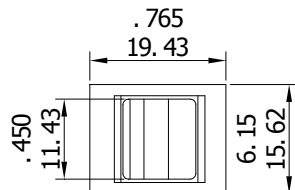
PANEL THICKNESS



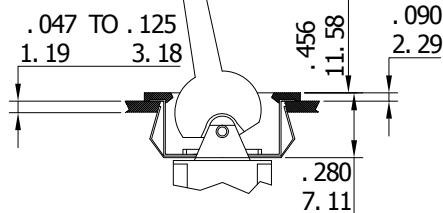
PANEL MOUNTING



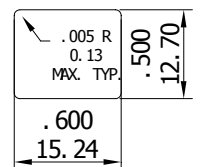
R5



PANEL THICKNESS



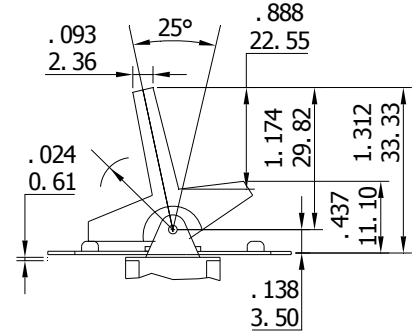
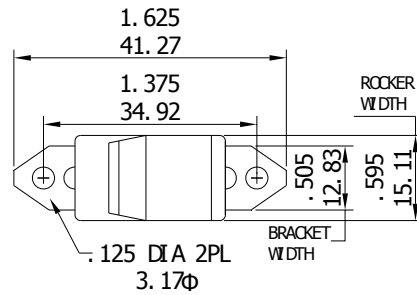
PANEL MOUNTING



M300 系列

MASSUSE SWITCH

R6



規格

接觸負載: 5A 120VAC/ 28 VDC (阻性)

電氣壽命: 50,000 循環 (滿負載)

初始接觸電阻: 10MΩ (2.4VDC.100mA)

(適用於銀合金或鍍金觸點材料)

絕緣電阻: 1,000MΩmin.

介質耐壓: 1,000V RMS

工作溫度: -30°C ~ 85°C.

材料

外框-密膠或己二烯酞酸脂(DAP)

搖頭手柄- 黃銅, 鍍鉻

襯套 - 黃銅, 鍍鎳

墊圈 - 不銹鋼

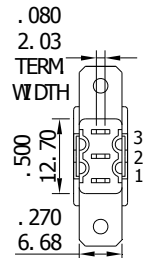
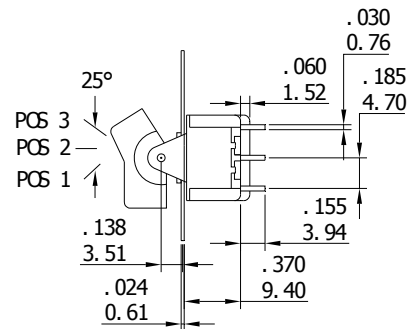
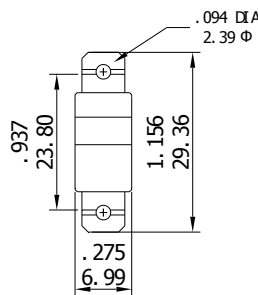
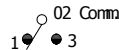
終端觸點 銀合金, 鍍銀

線端 黃銅, 鍍銀

中心觸點和終端觸點 - 黃銅, 鍍銀

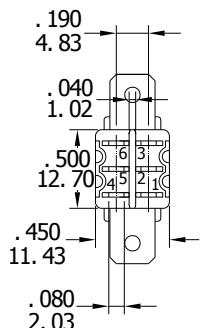
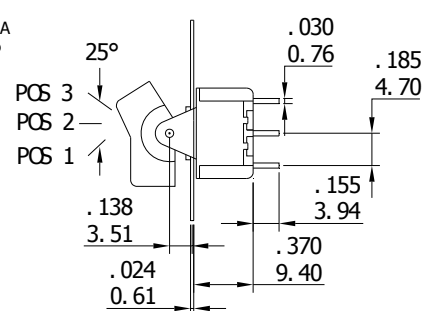
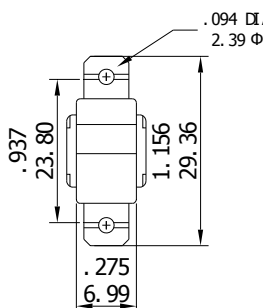
產品 編號	切換位置		
R101	ON	NONE	ON
R102	ON	NONE	(ON)
R103	ON	OFF	ON
R104	(ON)	OFF	(ON)
R105	ON	OFF	(ON)
Term.	2-3	OPEN	2-1
Comm..			

Schematic



產品 編號	切換位置		
R201	ON	NONE	ON
R202	ON	NONE	(ON)
R203	ON	OFF	ON
R204	(ON)	OFF	(ON)
R205	ON	OFF	(ON)
Term.	2-3	OPEN	2-1
Comm..	5-6		5-4

Schematic



SPDT



DPDT

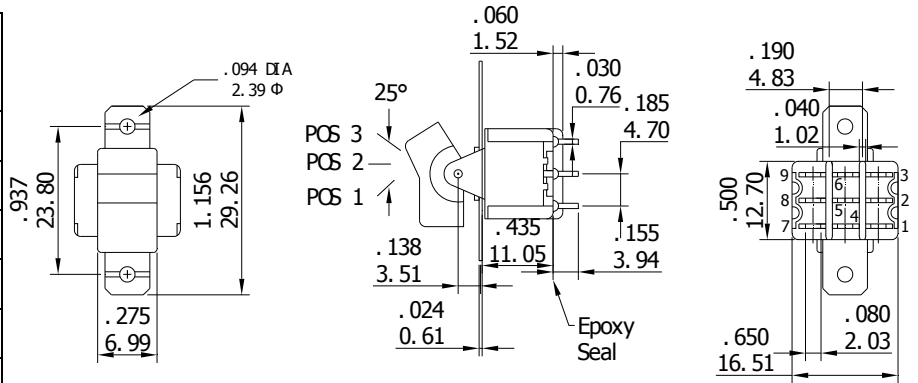
M300 系列

MASSUSE SWITCH

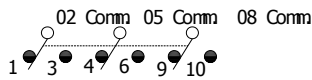


3PDT

產品 編號	切換位置		
	ON	NONE	ON
R301	ON	NONE	ON
R302	ON	NONE	(ON)
R303	ON	OFF	ON
R304	(ON)	OFF	(ON)
R305	ON	OFF	(ON)
Term.	2-3,5-6	OPEN	2-1,5-4
Comm..	8-9		8-7

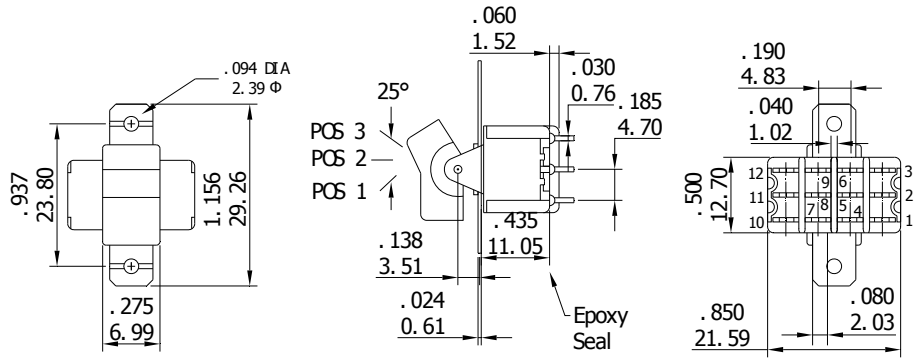


Schematic

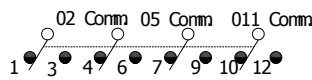


4PDT

產品 編號	切換位置		
	ON	NONE	ON
R401	ON	NONE	ON
R402	ON	NONE	(ON)
R403	ON	OFF	ON
R404	(ON)	OFF	(ON)
R405	ON	OFF	(ON)
Term.	2-3,5-6	OPEN	2-1,5-4
Comm..	8-9,11-12		8-7,11-10

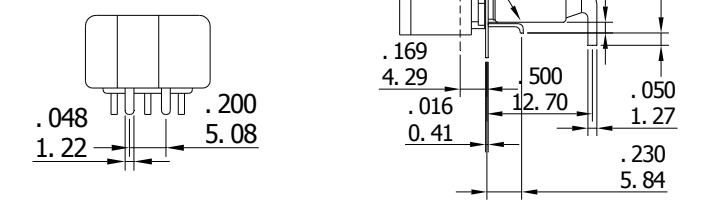


Schematic

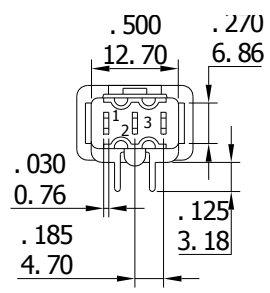
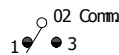


SPDT

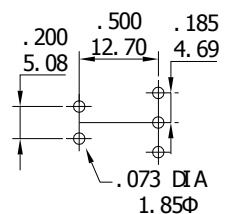
產品 編號	切換位置		
	ON	NONE	ON
RM1-1	ON	NONE	ON
RM1-2	ON	NONE	(ON)
RM1-3	ON	OFF	ON
RM1-4	(ON)	OFF	(ON)
RM1-5	ON	OFF	(ON)
Term.	2-3	OPEN	2-1
Comm..			



Schematic



P.C. MOUNTING

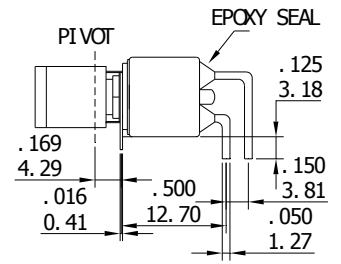
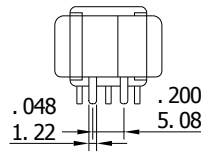
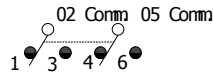




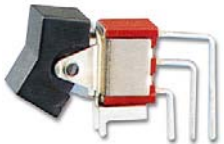
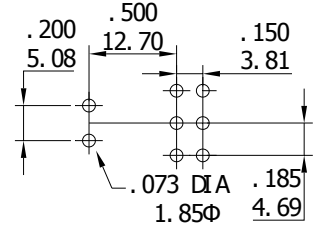
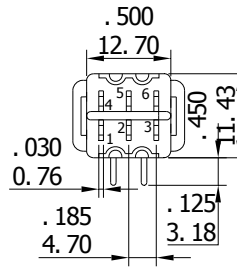
DPDT

產品 編號	切換位置		
	ON	NONE	ON
RM2-1	ON	NONE	ON
RM2-2	ON	NONE	(ON)
RM2-3	ON	OFF	ON
RM2-4	(ON)	OFF	(ON)
RM2-5	ON	OFF	(ON)
Term.	2-3	OPEN	2-1
Comm..	5-6		5-4

Schematic



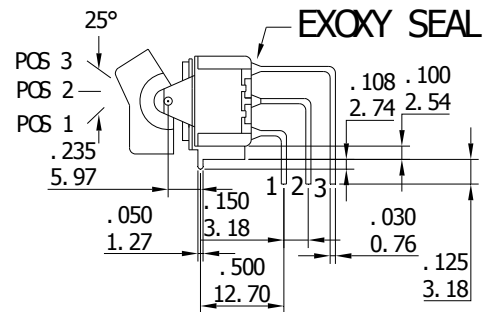
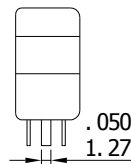
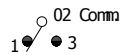
P. C. MOUNTING



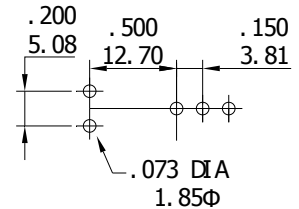
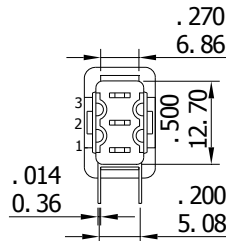
SPDT

產品 編號	切換位置		
	ON	NONE	ON
RL1-1	ON	NONE	ON
RL1-2	ON	NONE	(ON)
RL1-3	ON	OFF	ON
RL1-4	(ON)	OFF	(ON)
RL1-5	ON	OFF	(ON)
Term.	2-3	OPEN	2-1
Comm..			

Schematic

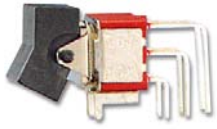


P. C. MOUNTING



M300 系列

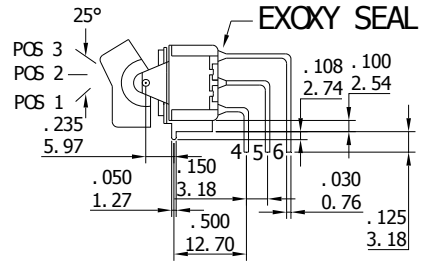
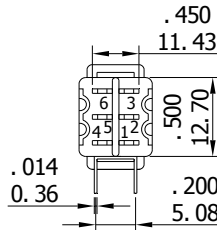
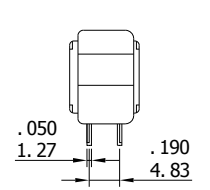
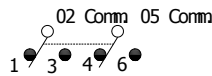
MASSUSE SWITCH



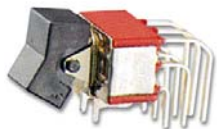
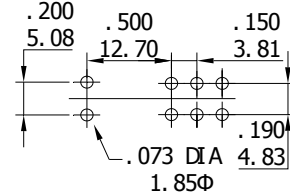
DPDT

產品 編號	切換位置		
	ON	NONE	ON
RL2-1	ON	NONE	ON
RL2-2	ON	NONE	(ON)
RL2-3	ON	OFF	ON
RL2-4	(ON)	OFF	(ON)
RL2-5	ON	OFF	(ON)
Term.	2-3	OPEN	2-1
Comm..	5-6		5-4

Schematic



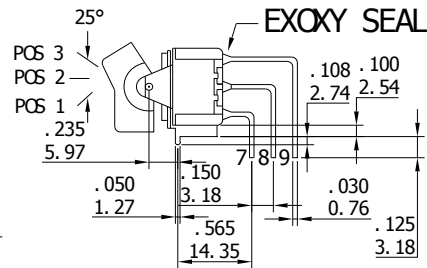
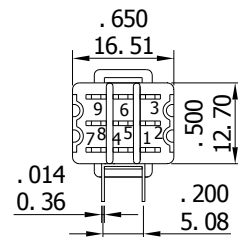
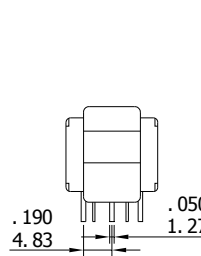
P. C. MOUNTING



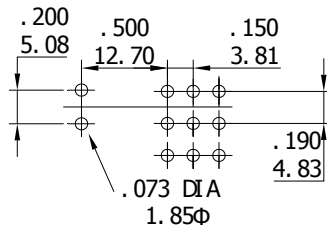
3PDT

產品 編號	切換位置		
	ON	NONE	ON
RL3-1	ON	NONE	ON
RL3-2	ON	NONE	(ON)
RL3-3	ON	OFF	ON
RL3-4	(ON)	OFF	(ON)
RL3-5	ON	OFF	(ON)
Term.	2-3,5-6	OPEN	2-1,5-4
Comm..	8-9,11-12		8-7,11-10

Schematic



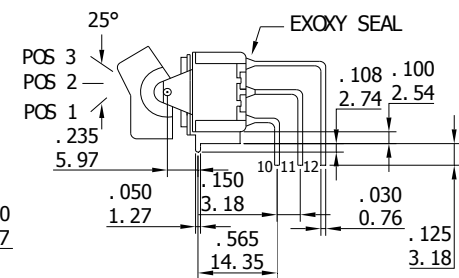
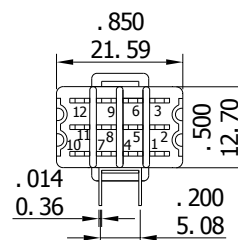
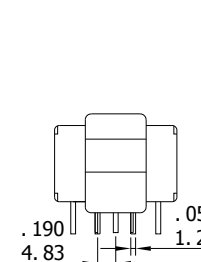
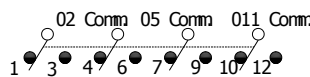
P. C. MOUNTING



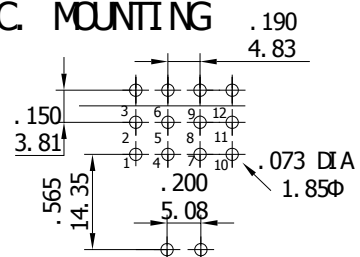
4PDT

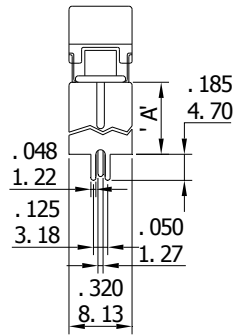
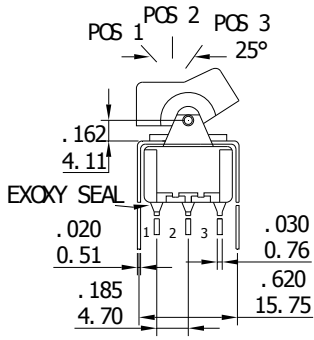
產品 編號	切換位置		
	ON	NONE	ON
RL4-1	ON	NONE	ON
RL4-2	ON	NONE	(ON)
RL4-3	ON	OFF	ON
RL4-4	(ON)	OFF	(ON)
RL4-5	ON	OFF	(ON)
Term.	2-3,5-6	OPEN	2-1,5-4
Comm..	8-9,11-12		8-7,11-10

Schematic

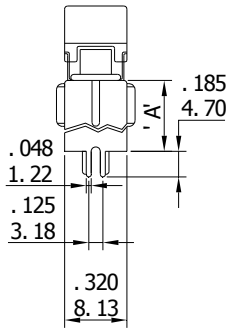
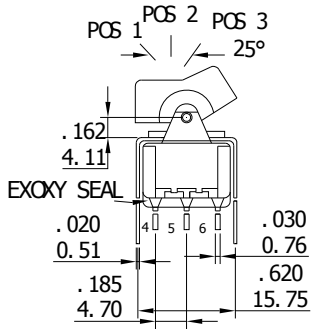
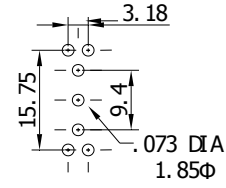


P. C. MOUNTING

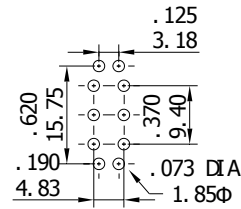




P. C. MOUNTING



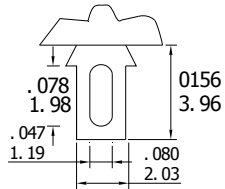
P. C. MOUNTING



Option CODE	DIM. 'A'
VS2	.460 11.68
VS3	.630 16.00

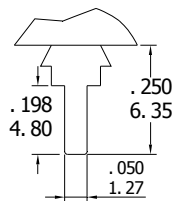
TERMINATION OPTION

A1STD



THK .030 (0.76)

A2



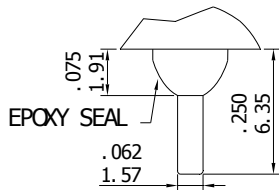
THK .030 (0.76)

A3-E



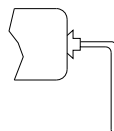
EPOXY SEAL

A4-E



EPOXY SEAL

A5



A6

