

規格

接觸負載: 5A 120VAC/ 28 VDC (阻性)

電氣壽命: 50,000 循環 (滿負載)

初始接觸電阻: 10MΩ (2.4VDC.100mA)

(適用於銀合金或鍍金觸點材料)

絕緣電阻: 1,000MΩmin.

介質耐壓: 1,000V RMS

工作溫度: -30°C ~ 85°C.

材料

外框-密膠或己二烯酞酸脂(DAP)

搖頭手柄- 黃銅, 鍍鉻

襯套 - 黃銅, 鍍鎳

墊圈 - 不銹鋼

終端觸點 銀合金, 鍍銀

線端 黃銅, 鍍銀

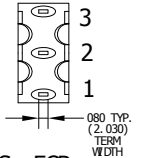
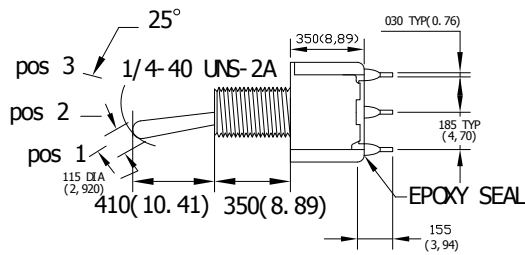
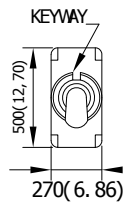
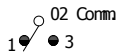
中心觸點和終端觸點 - 黃銅, 鍍銀



SPDT

產品 編號	切換位置		
T101	ON	NONE	ON
T102	ON	NONE	(ON)
T103	ON	OFF	ON
T104	(ON)	OFF	(ON)
T105	ON	OFF	(ON)
Term.	2-3	OPEN	2-1
Comm..			

Schematic



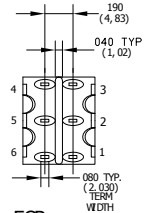
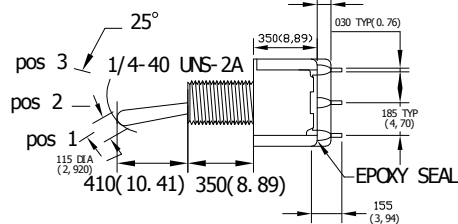
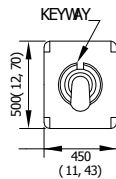
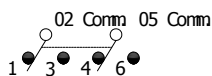
TERM NOS. FOR REFERENCE ONLY



DPDT

產品 編號	切換位置		
T201	ON	NONE	ON
T202	ON	NONE	(ON)
T203	ON	OFF	ON
T204	(ON)	OFF	(ON)
T205	ON	OFF	(ON)
Term.	2-3	OPEN	2-1
Comm..	5-6		5-4

Schematic



TERM NOS. FOR REFERENCE ONLY

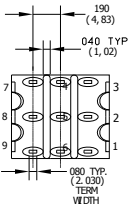
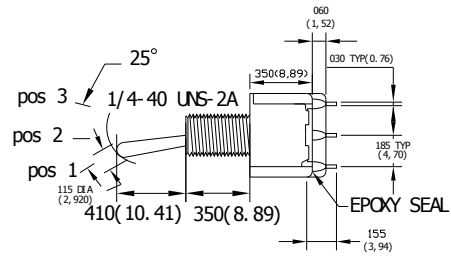
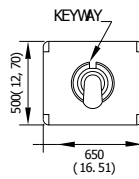
M100 系列

MASSUSE SWITCH

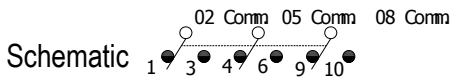


3PDT

產品 編號	切換位置		
	T301	ON	NONE
T302	ON	NONE	(ON)
T303	ON	OFF	ON
T304	(ON)	OFF	(ON)
T305	ON	OFF	(ON)
Term.	2-3	OPEN	2-1
Comm..	5-6,8-9		5-4,8-7

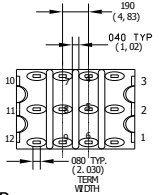
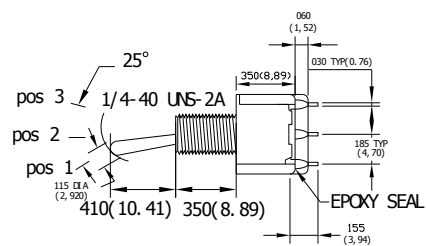
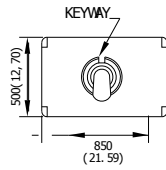


TERM NOS. FOR REFERENCE ONLY

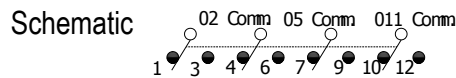


4PDT

產品 編號	切換位置		
	T401	ON	NONE
T402	ON	NONE	(ON)
T403	ON	OFF	ON
T404	(ON)	OFF	(ON)
T405	ON	OFF	(ON)
Term.	2-3,5-6	OPEN	2-1,5-4
Comm..	8-9,11-12		8-7,11-10

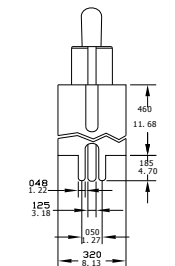
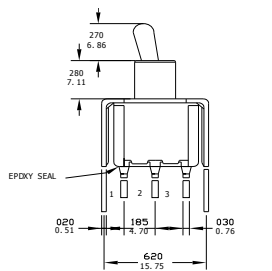


TERM NOS. FOR REFERENCE ONLY

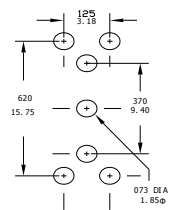


T-10

SPDT

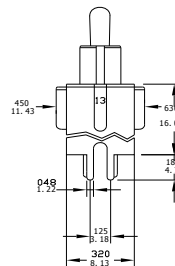
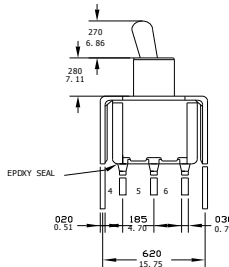


P. C. MOUNTING

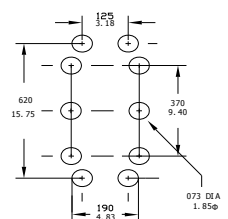


T-20

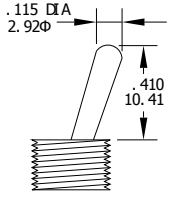
DPDT



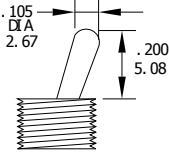
P. C. MOUNTING



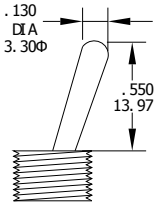
T1



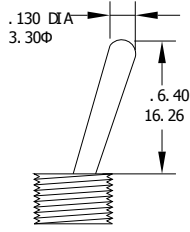
T2



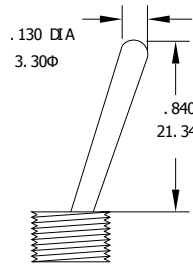
T3



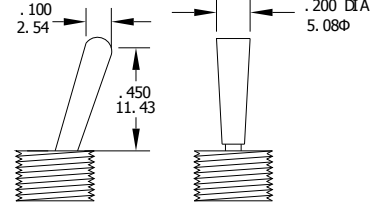
T4



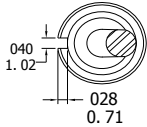
T5



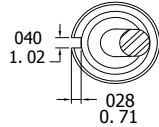
T6



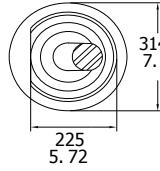
B2 NON-THD



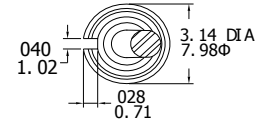
B4 NON-THD



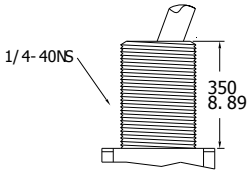
B5 HIGH TORQUE



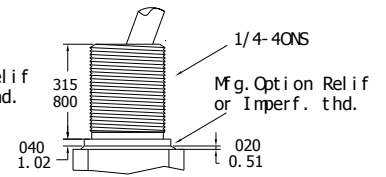
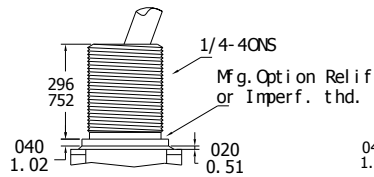
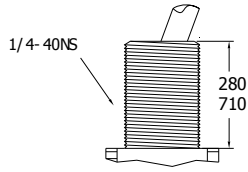
B6 HIGH TORQUE



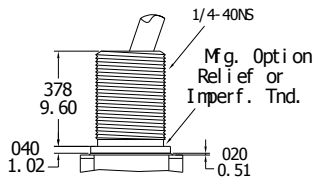
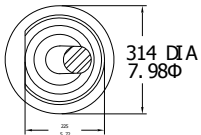
B1 THD STD



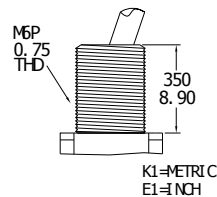
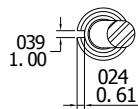
B3 THD



B7 LONG

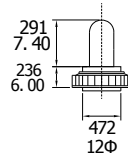


B8 METRIC

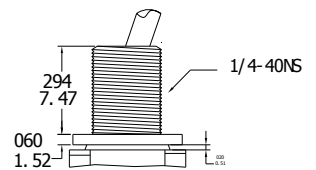
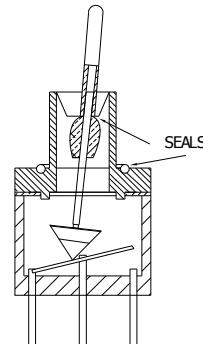
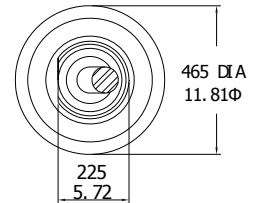


RUBBER HOOD

SEALING

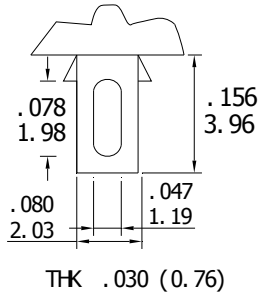


B9 SPLASH-PROOF

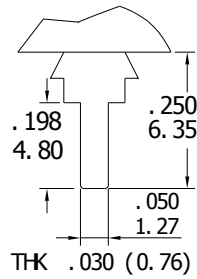


TERMINATION OPTIONS

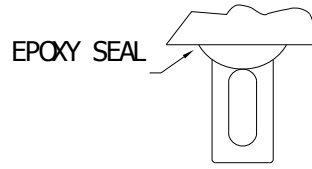
A1 STD



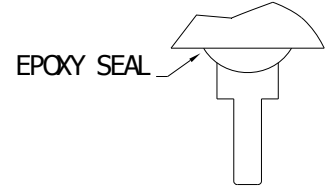
A2



A3-E

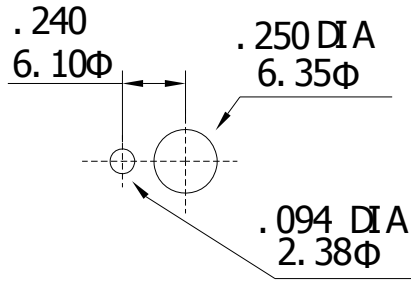
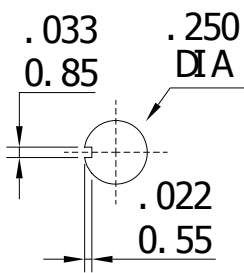


A4-E

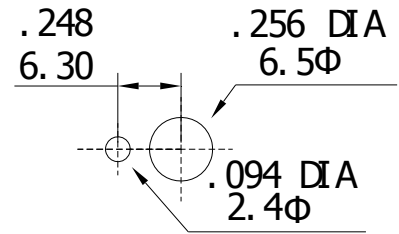
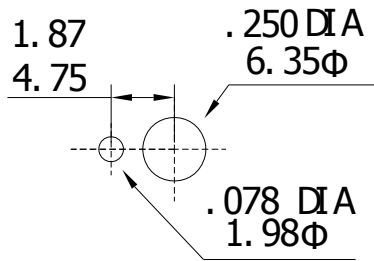
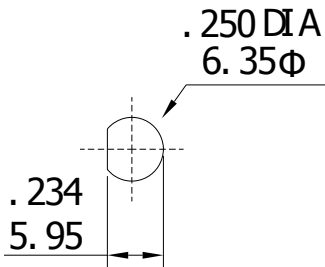
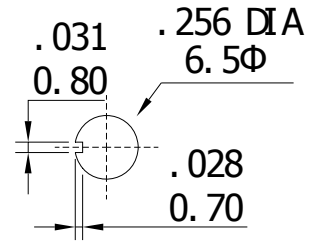


PANEL MOUNTING

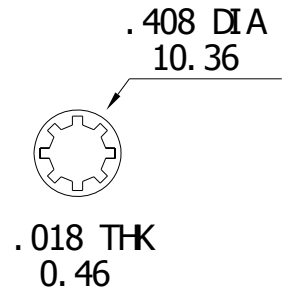
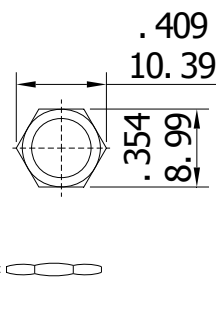
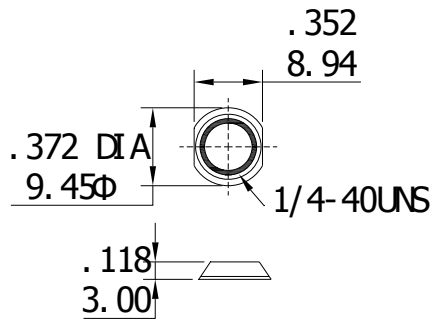
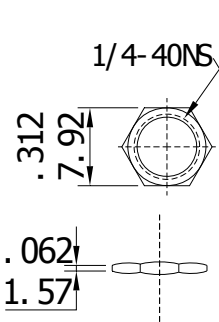
1/4 IN. BUSHING



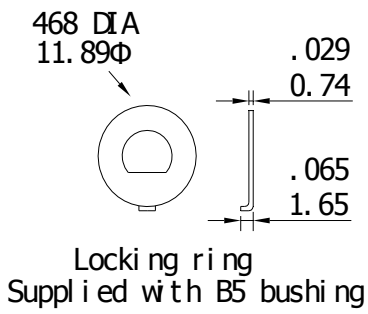
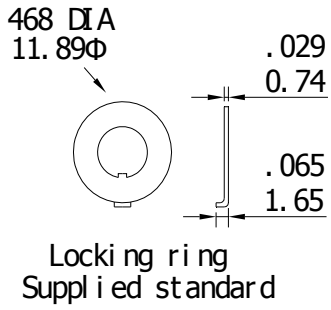
METRIC BUSHING



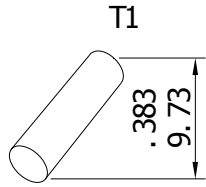
UNT



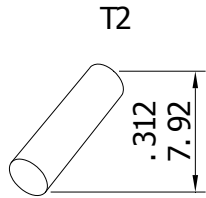
LOCKING RING



TOGGLE CAPS



Material
Vinyl
for Option "S"



Material
Polyethylene
for Option "S"